

 SANSIRI



**A PLACE IN YOUR HEART**

BURASIRI

SANPHISUEA



## PROJECT INFORMATION

<b>Location</b>	:	Outer Ring Road, San Phi Suea, Mueang, Chiang Mai
<b>Project size</b>	:	about 66 rai
<b>Project type</b>	:	2 – storey detached homes
<b>Number of units</b>	:	238
<b>Plot sizes</b>	:	50 – 130 square wa
<b>Unit's square metreage</b>	:	128, 159, 166,190 and 247 square metres

# CLEAR BLUE SKIES AND LUSH GREEN FIELDS

SURROUNDED BY 360 DEGREE VIEWS OF THE MOUNTAIN,  
CREATE AN ATMOSPHERE OF ULTIMATE RELAXATION EVERYDAY

---

THIS PRECIOUS GEM IS TUCKED AWAY  
IN THE EMBRACE OF NATURE  
EVERY SQUARE INCH BRIMS WITH CONTENTMENT,  
RELAXATION, AND WARMTH OF A HAPPY FAMILY.







## A HIDDEN GEM

BURASIRI SAN PHI SUEA DRAWS INSPIRATION FROM THE COLOURS OF THAI PRECIOUS GEMS. CONTEMPORARY LANNA INFLUENCES ARE EVIDENT IN ITS ARCHITECTURE. FOR INSTANCE, EVERY HOME FEATURES AN OVERSIZED BALCONY, WHICH FUNCTIONS AS A SHARED SPACE FOR THE FAMILY. DECORATIVE SCREENS AND RAILINGS ARE MODELLED AFTER THE PATTERNS OF CLASSIC HANDICRAFTS FROM THIS REGION. DESPITE THESE TRADITIONAL ELEMENTS, EVERY HOME HAS BEEN DESIGNED TO CATER TO MODERN LIFESTYLES.







BURASIRI SAN PHI SUEA FOCUSES ON PLEASING THE EYES AS WELL AS RESPONDING TO THE DEMANDS OF ALL IN THE FAMILY. ITS EXQUISITE DESIGN OFFERS MODERN LIVING CONVENIENCES AND FACILITATES QUALITY FAMILY TIME. ALL OF THIS IS COMPLEMENTED BY WELL-GROOMED GARDENS AND A BREATHTAKING LUXURIANT MOUNTAINSCAPE, ENSURING THE ALLURE OF THE OUTSIDE MATCHES THE DELIGHTFUL SPIRIT OF THE INSIDE.





# HOUSE TYPE

---

METICULOUSLY DESIGNED IN THE "HUEN LANNA"  
(LANNA HOME) CONCEPT  
INCORPORATING THE FORM INTO THE MODERN LIFESTYLE



House Type : HUANNARA

# HUANNARA

**128 square metres**

3 bedrooms, 3 bathrooms, 1 living room,  
1 dining room, 1 kitchen and a 2-vehicle carport



1<sup>st</sup> Floor



2<sup>nd</sup> Floor



House Type : HUANNARIN

# HUANNARIN

**159 square metres**

4 bedrooms, 3 bathrooms, 1 living room,  
1 dining room, 1 kitchen and a 2-vehicle carport



1<sup>st</sup> Floor



2<sup>nd</sup> Floor



House Type : HUANTARIT

# HUANTARIT

**166 square metres**

4 bedrooms, 3 bathrooms, 1 living room,  
1 dining room, 1 kitchen and a 2-vehicle carport



1<sup>st</sup> Floor



2<sup>nd</sup> Floor



House Type : HUANTARIN

# HUANTARIN

**190 square metres**

4 bedrooms, 3 bathrooms, 1 living room,  
1 dining room, 1 kitchen and a 2-vehicle carport



1<sup>st</sup> Floor



2<sup>nd</sup> Floor



House Type : HUANTANIN

# HUANTANIN

**247 square metres**

4 bedrooms, 4 bathrooms, 1 living room,  
1 dining room, 1 kitchen and a 2-vehicle carport



1<sup>st</sup> Floor



2<sup>nd</sup> Floor



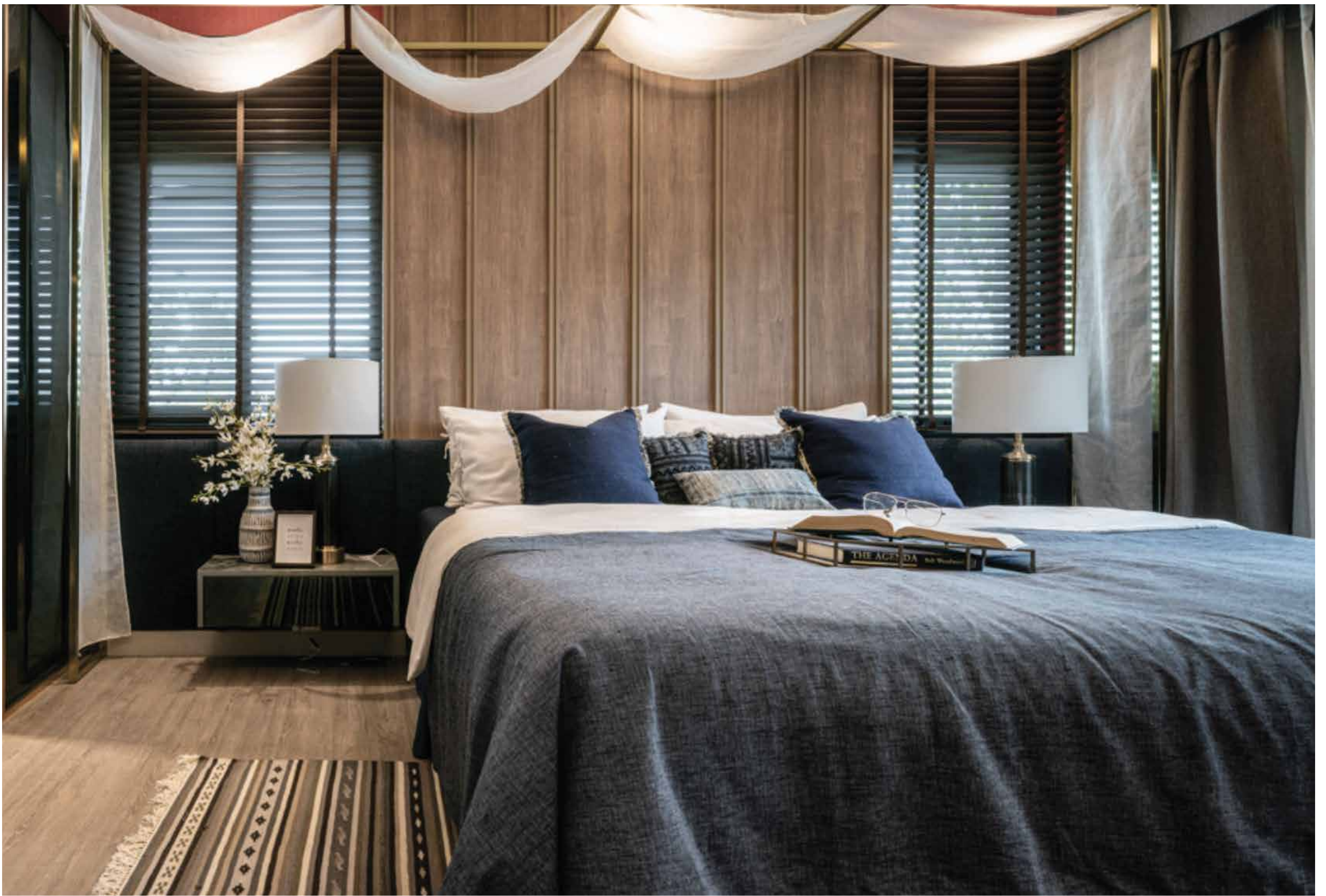
# INNOVATION

---

FOR ENHANCED PHYSICAL AND MENTAL HEALTH  
SANSIRI IS COMMITTED TO CREATE INNOVATIONS THAT FOSTER  
ABSOLUTE CONVENIENCE

PERFECT FOR THE STYLE OF LIVING IN THE MODERN TIMES  
SO YOU AND YOUR FAMILY CAN LIVE THE MOST PERFECT AND EASY LIFE







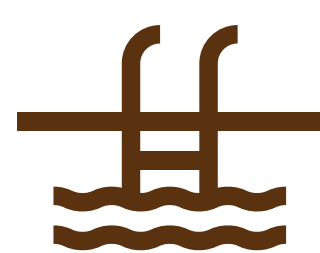


## AMENITIES WITHIN THE PROJECT



### CLUBHOUSE

INSPIRED BY THE HIGH AND OPEN LOWER LEVEL IN LANNA STYLE FOR EASY FLOW OF VENILATION



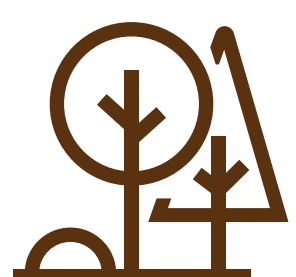
### SWIMMING POOL ( 25-METRE)

FOR YOUR LEISURELY SWIM WHILE ADMIRING THE SURROUNDING GREEN MOUNTAINS



### FITNESS ROOM

EXERCISE IN THE FULLY-EQUIPPED FITNESS ROOM AS YOU TAKE IN THE SHADY NATURAL SCENERY



### CENTRAL GARDEN

DESIGNED IN THE "MON" OR HILLSIDE CONCEPT TO MIRROR THE SILHOUETTE OT THE MOUNTAINS IN THE BACKGROUND AS YOU ARE ENVELOPED IN FLOWERS BURSTING WITH WILD COLOURS



### FREE WI-FI

ENJOY YOUR FAVOURITE MOVIE OR WORK ON YOUR PROJECT AS YOU CHILL IN THE CLUBHOUSE AREA WITH FREE WI-FI

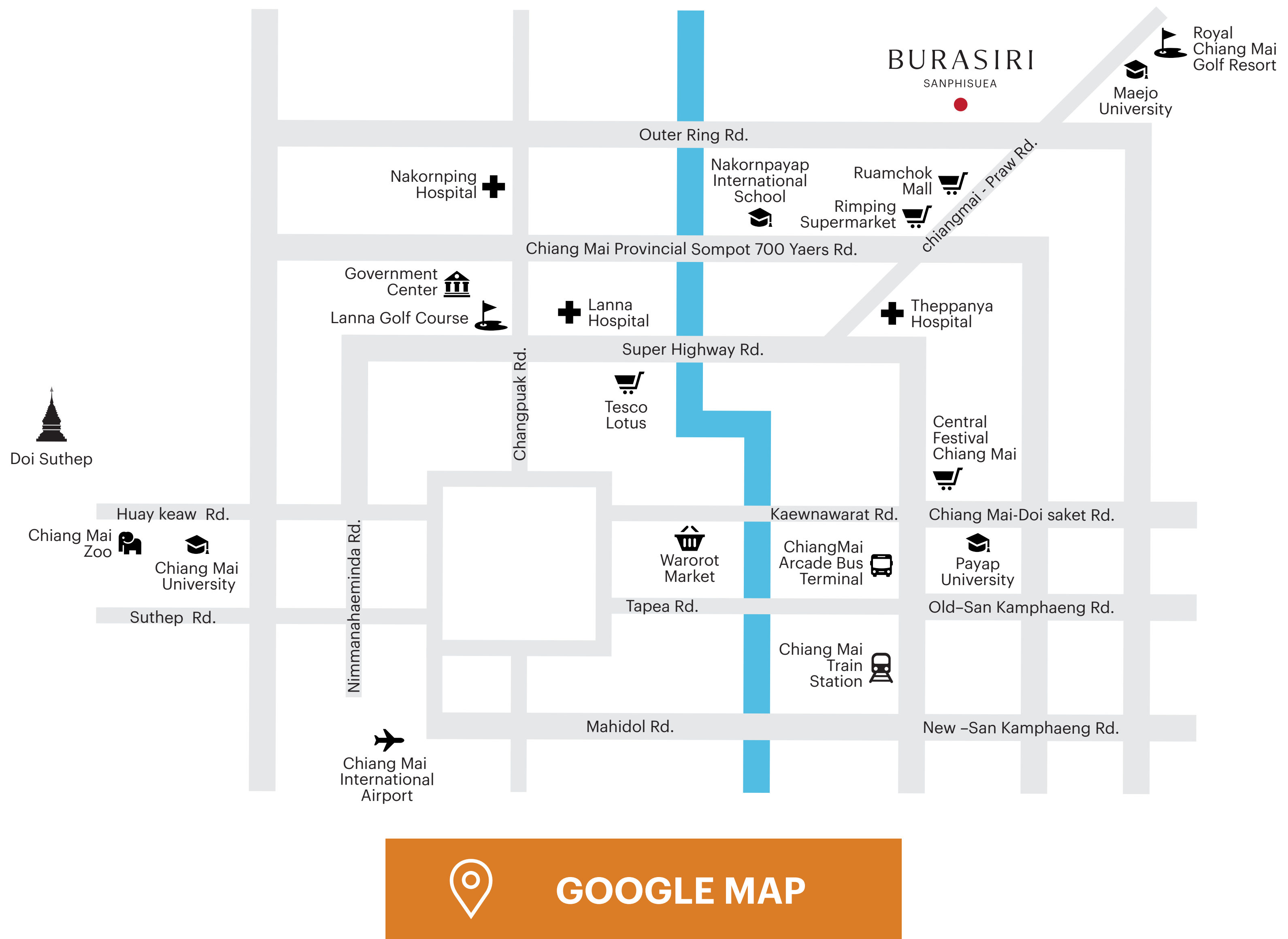


### 24-HOUR SECURITY SYSTEM

FEEL SECURED WITH THE EASY PASS CARD AND CCTV CAMERAS AT ALL STRATEGIC LOCATIONS THROUGHOUT THE PROJECT



## Location



LOCATED ON THE OUTER RING ROAD WHICH IS THE MAIN ROUTE TO ARRIVE IN OR DEPART CHIANG MAI CITY. IT TAKES ONLY 15 MINUTES TO DRIVE INTO THE HEART OF THE CITY, WHILE SITUATING CLOSE TO A VARIETY OF FACILITIES AND AMENITIES FOR THE LEISURELY LIFE – EVERYDAY.

- 5.5 kms. To Rimping supermarket
- 6 kms. To Government Center
- 7 kms. To Theppanya Hospital
- 8.5 kms. To Central Festival
- 9 kms. To Payap University
- 12 kms. To Nimmanhaeminda Road
- 18.5 kms. To Chiang Mai Airport



**Sale Gallery's Opening Hours**

**9:00 -18:00**

Tel. 1685

**BURASIRI**

SANPHISUEA

**CALL 1685 | SANSIRI.COM**