



PHAHON - LADPRAO

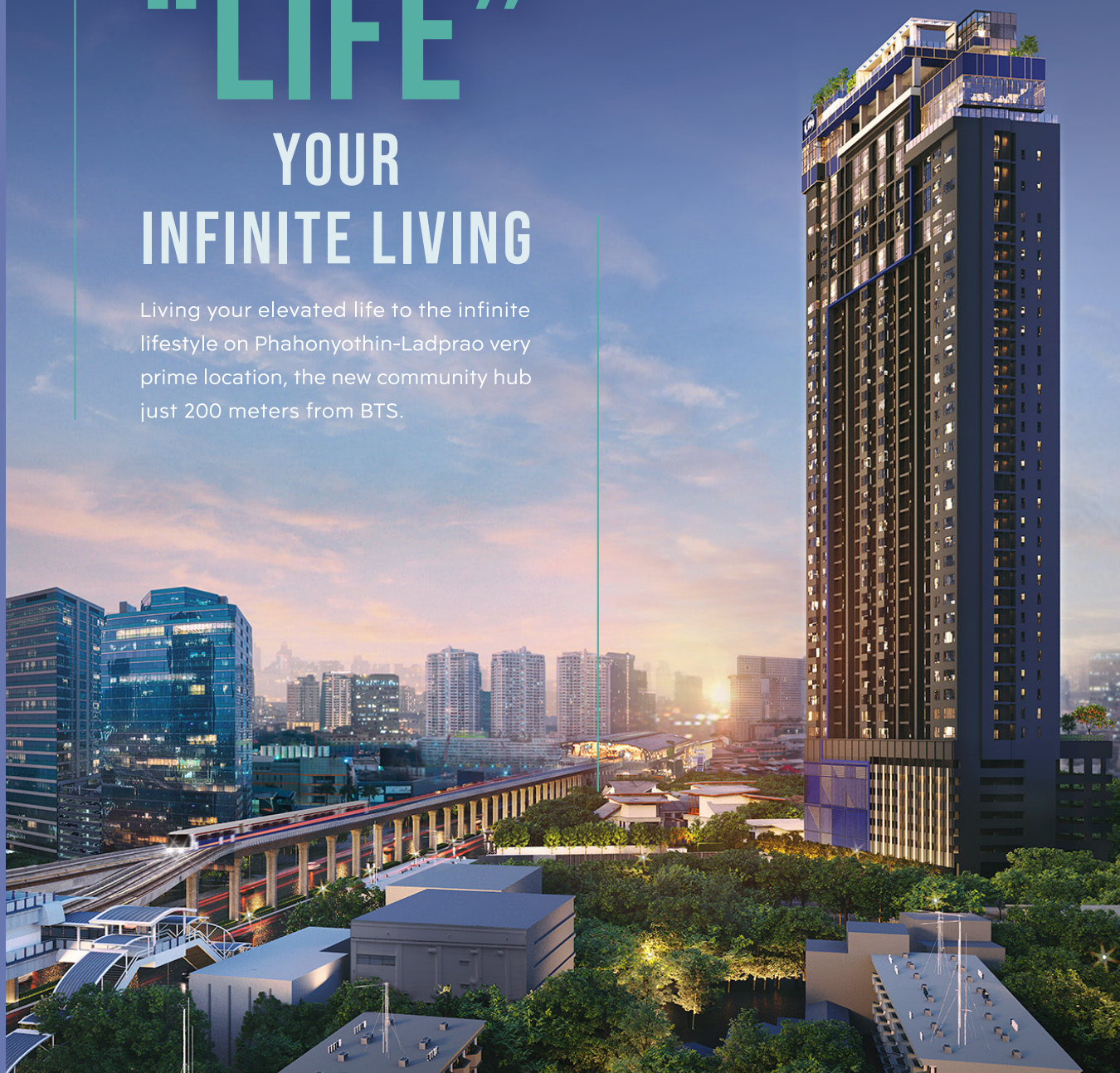


**INFINITE**  
-  
**LADPRAO**

# “LIFE”

## YOUR INFINITE LIVING

Living your elevated life to the infinite lifestyle on Phahonyothin-Ladprao very prime location, the new community hub just 200 meters from BTS.



EXCLUSIVE SKY CLUB



## PANORAMIC PARK VIEW & SCENIC SCENERY

Indulge in private relaxation, an expansive 700-rai park view, all to yourself; the ultimate serenity on Phahonyothin-Ladprao area.



---

LIFE PHAHON - LADPRAO

# FULFILL LIFESTYLE WITH MULTIFUNCTIONAL FACILITY



---

## 6 - Floor Facility

Multifunctional Facility responds to the interweaving trend of multiple lifestyles and cultures through different generations.

# PROJECT INFORMATION

**Project Name** : Life Phahon-Ladprao

**Location** : Phaholyothin Rd., Chom Phon Sub - District, Chatuchak District, Bangkok

**Total Area** : 2 - 2 - 92.2 Rais

**Number Of Units** : Residential 598 units and shop 1 unit

<b>Unit Type</b>	:	<b>Simplex</b>	<b>28.5 - 65.0</b>	<b>Sq.m.</b>	<b>Vertiplex</b>	<b>28.5 - 65.0</b>	<b>Sq.m.</b>
		Studio	28.5	Sq.m.	Type A	28.5	Sq.m.
		1 Bedroom	35.0	Sq.m.	Type B	35.0	Sq.m.
		1 Bedroom Plus	42.5	Sq.m.	Type C	40.5	Sq.m.
		2 Bedroom 2 Bathroom	57.0 - 65.0	Sq.m.	Type D	42.5	Sq.m.
					Type E	57.0	Sq.m.
					Type F	65.0	Sq.m.

<b>Facilities</b>	:	<p><b>G Floor</b></p> <ul style="list-style-type: none"> <li>• Exclusive Lobby</li> <li>• Privilege Lounge</li> <li>• Cozy Lounge</li> <li>• Green Pavilion</li> </ul> <p><b>2<sup>nd</sup> - 7<sup>th</sup> Floor</b></p> <ul style="list-style-type: none"> <li>• Parking Floor</li> </ul> <p><b>8<sup>th</sup> Floor</b></p> <ul style="list-style-type: none"> <li>• The Cardio Club</li> <li>• Garden</li> </ul> <p><b>38<sup>th</sup> Floor</b></p> <ul style="list-style-type: none"> <li>• The Sky Wing</li> <li>• Exclusive Sky Club</li> <li>• The Sunset Wing</li> <li>• The Entertainment</li> </ul>	<ul style="list-style-type: none"> <li>• The Parlour</li> <li>• Shop</li> <li>• Juristic</li> </ul>	<p><b>39<sup>th</sup> Floor</b></p> <p><b>The Cloud Social Club</b></p> <ul style="list-style-type: none"> <li>• Social Club</li> <li>• The Cloud Corner</li> <li>• Social Meeting</li> <li>• Private Living</li> </ul> <p><b>40<sup>th</sup> Floor</b></p> <p><b>Sky Pool Pavilion</b></p> <ul style="list-style-type: none"> <li>• Sky Pool Bed</li> <li>• Sky Pavilion Seat</li> <li>• Sky Lab Pool</li> <li>• Kids Pool</li> <li>• Sky Jacuzzi</li> </ul> <p><b>Active Atrium</b></p> <ul style="list-style-type: none"> <li>• Active Club</li> <li>• Burning Club</li> <li>• Private Gym</li> </ul> <p><b>Sky Park Rooftop</b></p> <ul style="list-style-type: none"> <li>• Sky Private Seat</li> <li>• Panoramic Sky Hill</li> <li>• Sky Courtyard</li> <li>• Sky Rooftop Bar</li> <li>• Private Sky Yard</li> <li>• Private Backyard</li> </ul>
-------------------	---	--	---	--



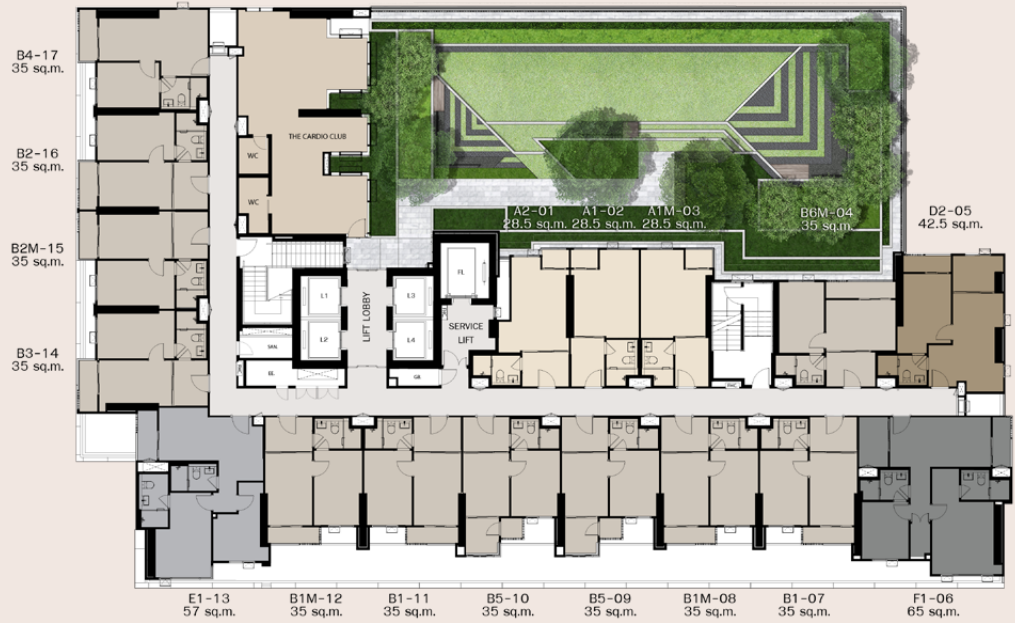
SKY LAB POOL

# FLOOR PLAN

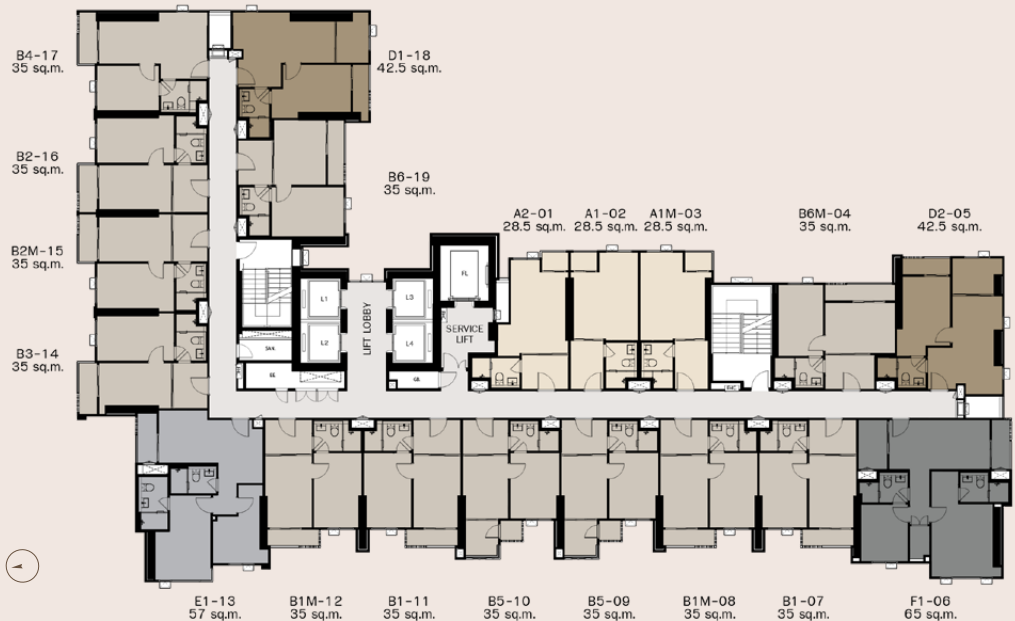


GROUND FLOOR

- 1. Exclusive Lobby
- 2. Privilege Lounge
- 3. Cozy Lounge
- 4. Green Pavilion

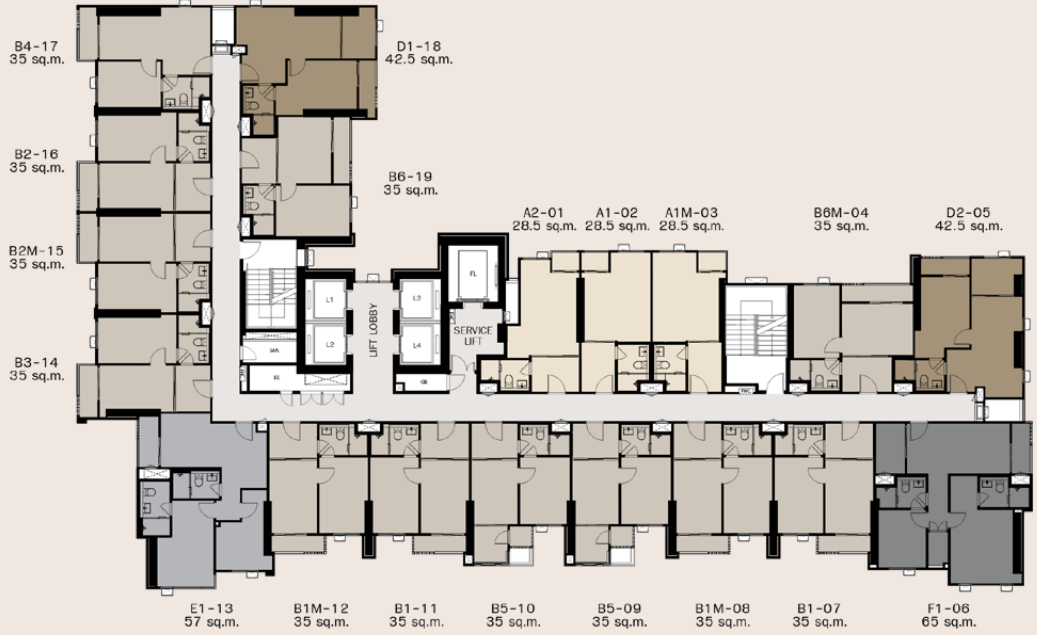


FLOOR 8<sup>th</sup>



FLOOR 9<sup>th</sup> - 33<sup>rd</sup>

# FLOOR PLAN



FLOOR 34<sup>th</sup> ↻



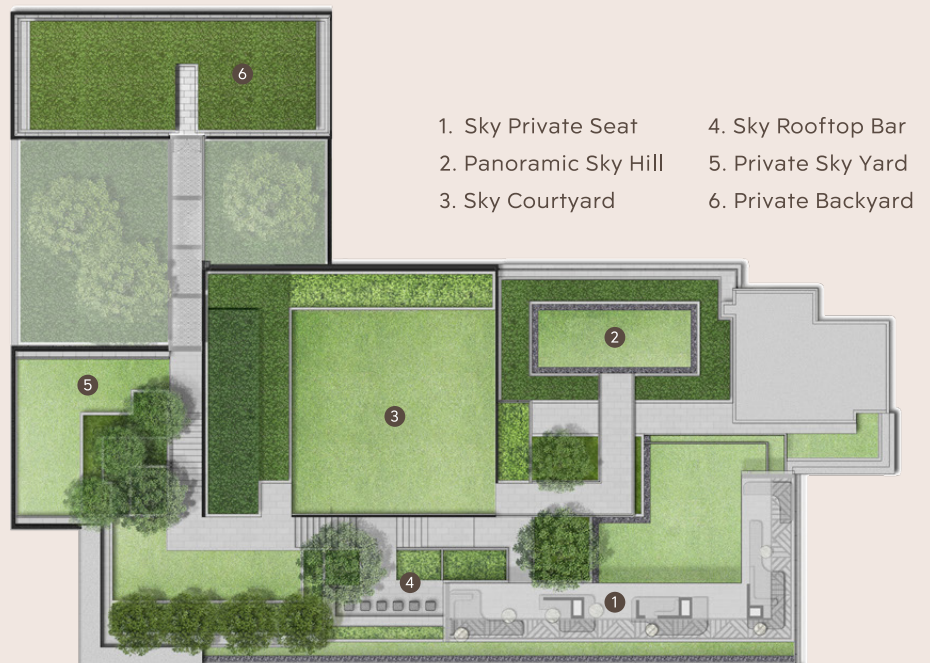
FLOOR 35<sup>th</sup> - 37<sup>th</sup> ↻



FLOOR 38<sup>th</sup> ↻



# FLOOR PLAN



# LIVE YOUR INFINITE “SPACE”



Stair and mezzanine installed are considered as furniture package for decoration only and provided by third party.

**SPACE CRAFTED FOR INFINITE LIVING, AN UPGRADE FOR “LIFE”, DRAWS ON CUSTOMIZABLE SPACIOUS HIGH-CEILING AREA WHERE CLOSED KITCHEN AND WALK-IN CLOSET CAN BE INCLUDED TO FULLY INTEGRATE A BORDERLESS LIFESTYLE.**



Stair and mezzanine installed are considered as furniture package for decoration only and they will be provided by third party.



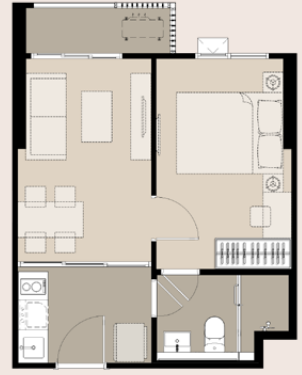
# UNIT PLAN



**STUDIO | A1 | 28.5 SQ.M.**



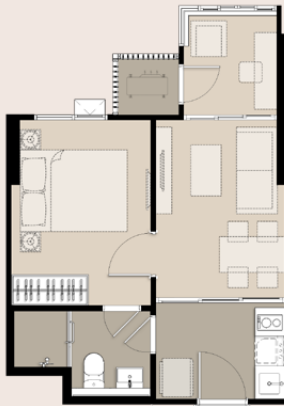
**STUDIO | A2 | 28.5 SQ.M.**



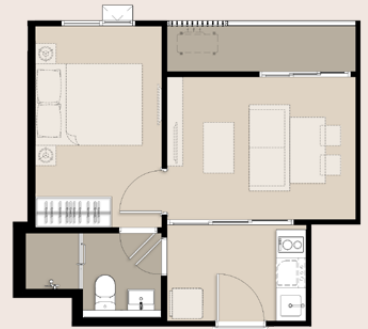
**ONE BEDROOM | B1 | 35 SQ.M.**



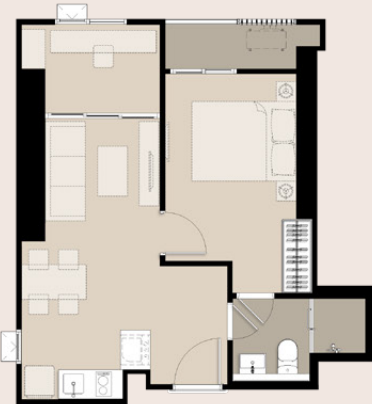
**ONE BEDROOM | B4 | 35 SQ.M.**



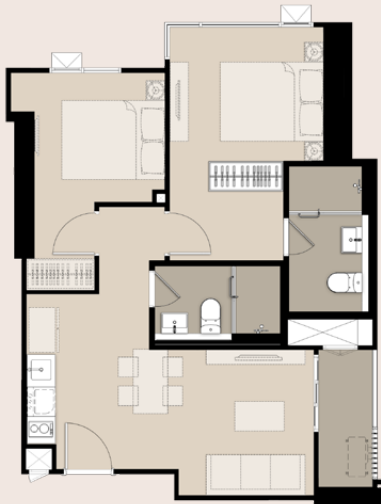
**ONE BEDROOM | B5 | 35 SQ.M.**



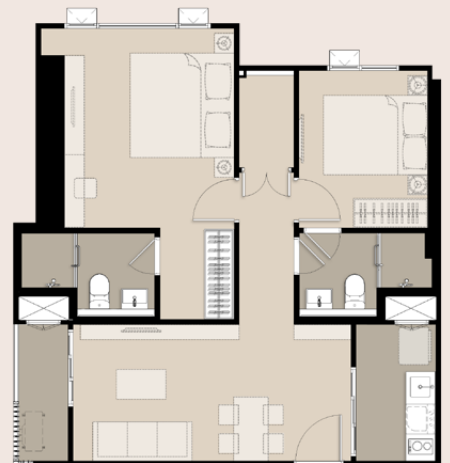
**ONE BEDROOM | B6M | 35 SQ.M.**



**ONE BEDROOM PLUS | D1 | 42.5 SQ.M.**



**TWO BEDROOM | E1 | 57 SQ.M.**



**TWO BEDROOM | F1 | 65 SQ.M.**



L : LIVE YOUR INFINITE LIFE I : INTERCONNECTED LIFESTYLE F : FULFILLED LIFESTYLE E : EXQUISITE LIFE





EXCLUSIVE LOBBY

LIFE PHAHON-LADPRAO

# LIVE THE NEXT LEVEL IN EXQUISITE CRAFTED DESIGN



COZY LOUNGE

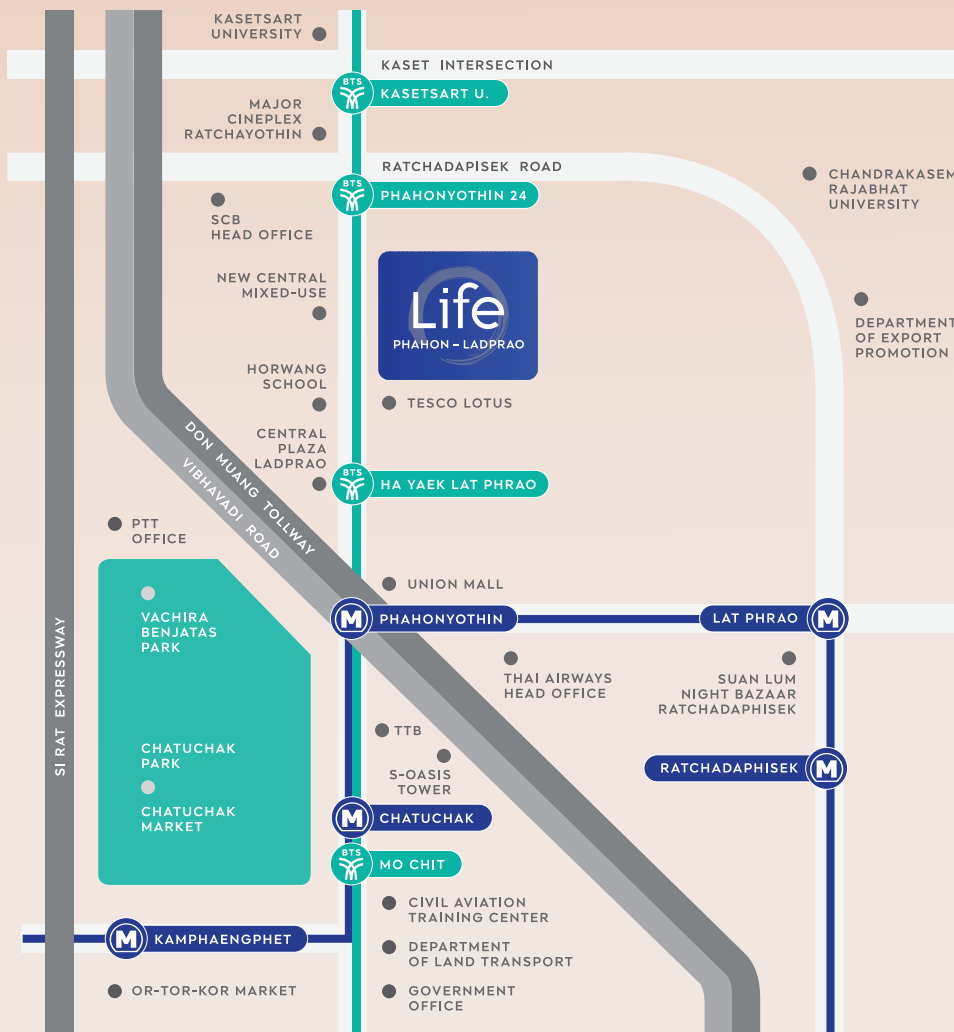


PRIVILEGE LOUNGE

# LIFE PHAHON - LADPRAO



## WHERE ATTENTION GOES ENERGY FLOWS.



CALL 1623 | APTTHAI.COM

Project's name : Life Phahon Ladprao. Project Details : 40-storey, and 1 underground floor, 1 mezzanine floor, 598 residential units and 1 commercial unit. Land owner and project developer : AP ME 16 Co., Ltd. Company registration number 0105562036753 Company Address : 170/57 18th Fl. Ocean Tower 1, Ratchadapisek Rd., Khongtoey Bangkok 10110. Chief Executive Officer : Mr. Anuphong Assavabhokhin. Registered capital of the company : THB 386,092,700. Project's location : Paholyothin Road, Jompol Sub-District, Chatuchak District, Bangkok. Land title deed numbers : 6741, 14678, 41322, 41325, 41991, 41992, 41993, 41994 and 55214 Jompol Sub-District, Chatuchak District, Bangkok. Project's area (as stated in the title deeds submitted for Building Permit) : 2 rai 2 ngan 92.2 square wah. (1,092.2 square wah). Common property areas: approximately 18,593.5 square meters. The lands and condominium buildings have been mortgaged with Bagkok Bank Public Company Limited. Duration of construction : 36 months. Date of commencement : May 2021 and expected to be completed approximately in April 2024. The condominium residence will be registered after the completion of project construction. \*All the information and images shown are for representation of the project concept and for advertising purpose only. The company reserves the right to change the data and/or details of the construction as deemed appropriate or to be in line with the related authorities' consideration without prior notice.